



**Simply 16**  
**Handle Bar Cable**  
**Attachment**

# Attach Handle Bar Cable

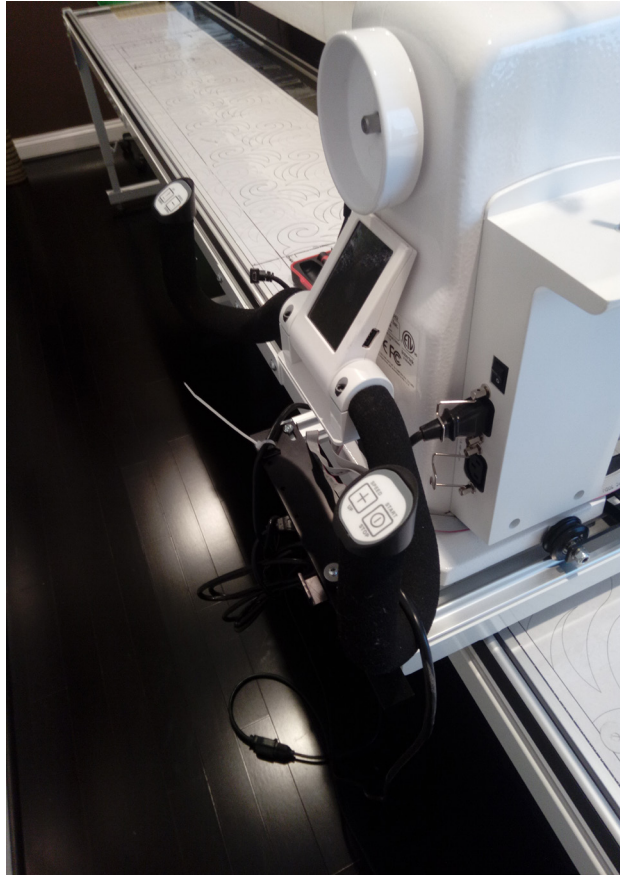
**1** Locate the display at either the front or the rear of the machine.

Locate the Rear or Front display

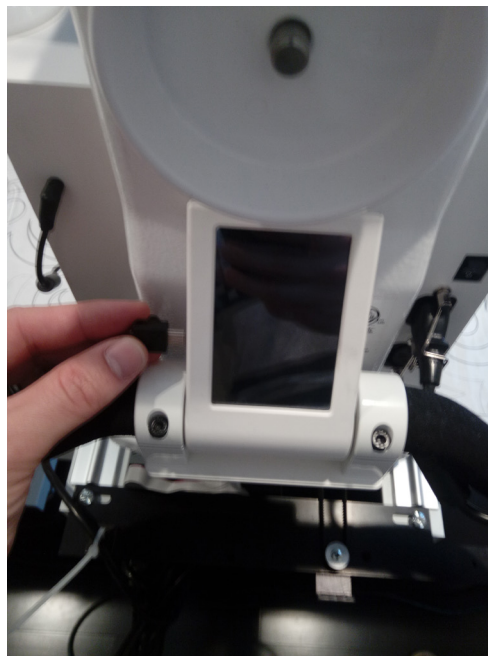
*Note: It is recommended to attach the cable to the rear display. If your machine does not have a rear display, it is fine to attach it to the front.*

*Attaching to the rear just keeps cables out of the way.*

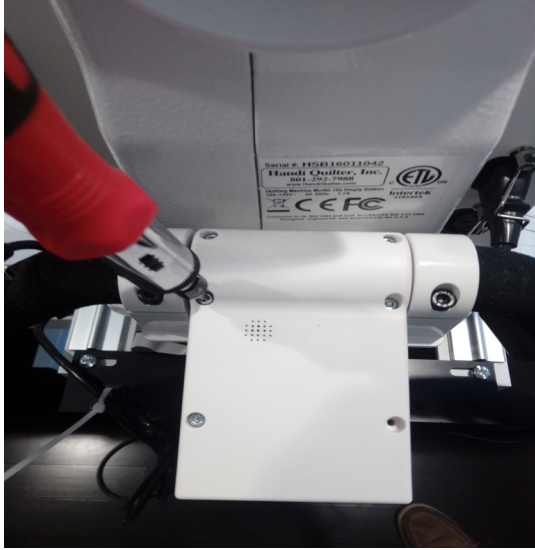
*These instructions will be running the attachment to the rear display, but mounting to the front will be identical.*



**2** Unplug the USB cable from the side of the display.

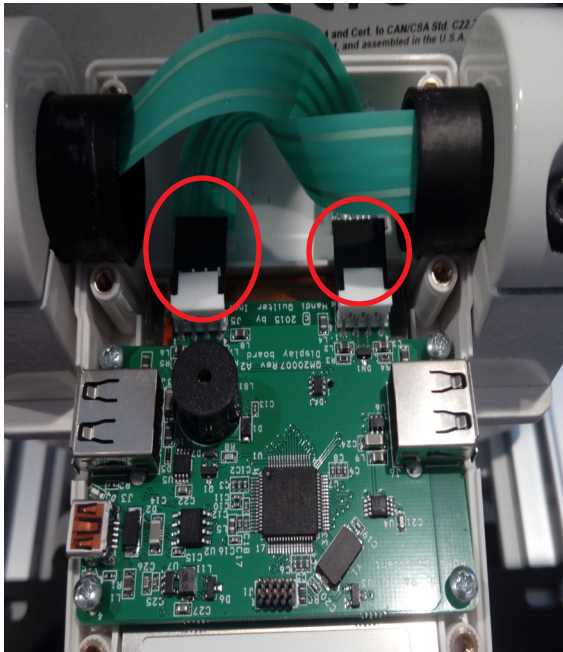
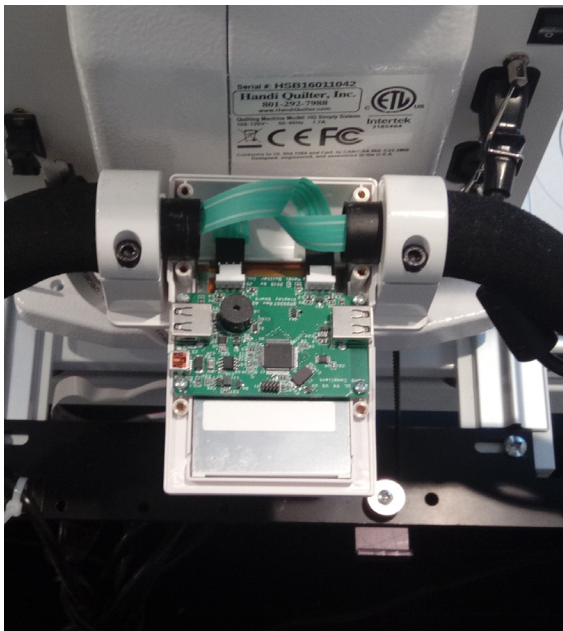


- 3** Pivot the display away from the machine and remove the 6 screws from the back of the display.



- 4** Remove the rear cover and unplug the 2 handle bar cables.

Note the orientation of how the cable is plugged in. You need to be sure to plug it back in in the same orientation.



x

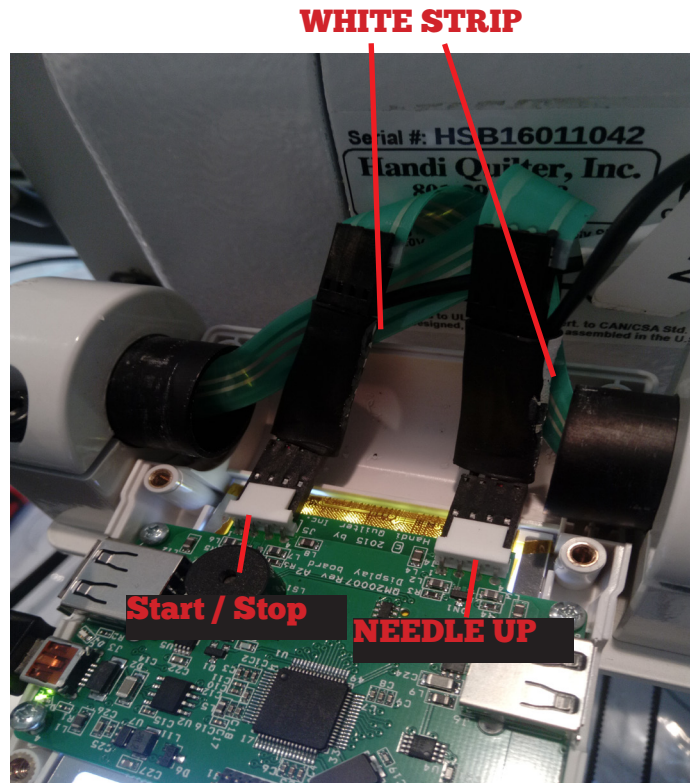
**5** Locate your handle bar cable that came with your robotics.

The end of the cable should have 2 connectors marked “needle up” and “Start/Stop”

Plug the “needle up” into the right port.

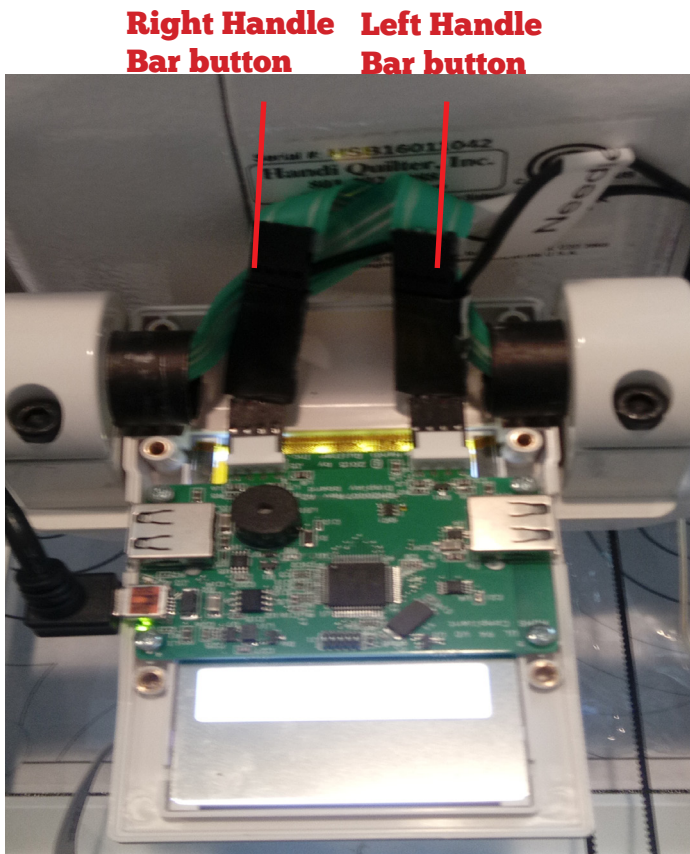
Plug the “Start/Stop” into the left port.

Note on the side of each connection is a white strip, this needs to be on the right



**6** Reattach your handle bar connections to the opposite end of the connection you just attached. Ensuring to pay attention to the orientation of the connection.

*YES, the right handle cable plugs into the left connection and the left handle cable plugs into the right connection.*



## 7 Power on your quilting machine.

Test all 4 of the handle bar buttons, they should all function as designed.

If they do not, a handle bar button cable (from the handle bar to the connection) has most likely been plugged in upside down and needs to be flipped.

## TEST TO MAKE SURE ALL BUTTONS WORK

## 8 Connect your handle bar cable into the black motor box “Handle Bar” port



## 9 From your touch screen display, go into the “Settings” then “Machine” tab.

*Note: If you have not yet mounted your display, follow the instructions in the “robotic mounting to machine” instructions*

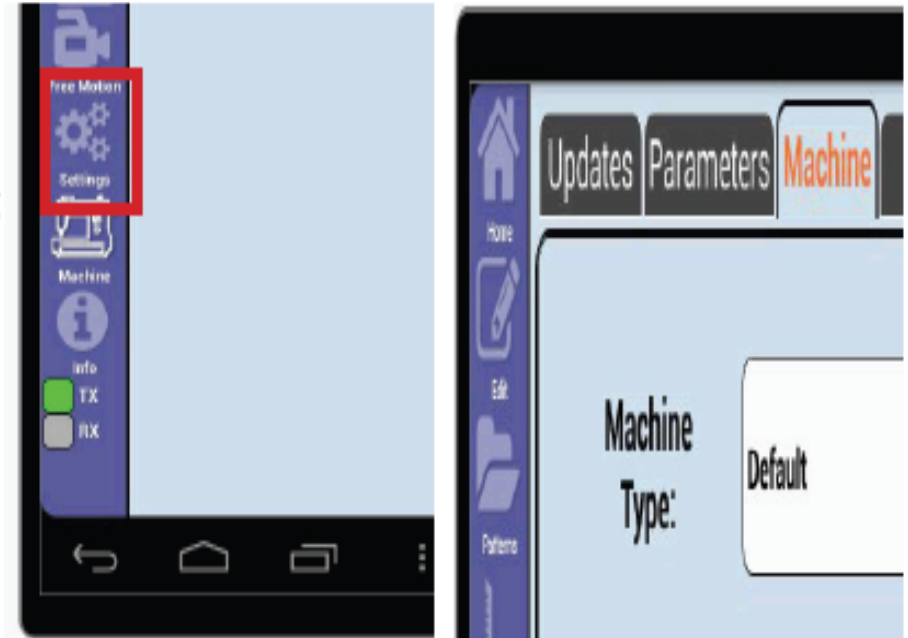
Follow the steps below for setting your machine type and testing.

*Note: This will all be done with the machine display STILL opened to confirm everything is attached proerly.*

# Setting Machine Type

- 1 Select “Settings” and then “Machine” from the top tabs.

Non-Android users will select the Home icon, Setup, then Advanced.



- 2 Select the Machine Type dropdown and select the proper machine type.

For a list of machine types refer to the table on the next page.

*Note: Anytime an update is performed the machine type will revert to Default, and will need to be updated again.*

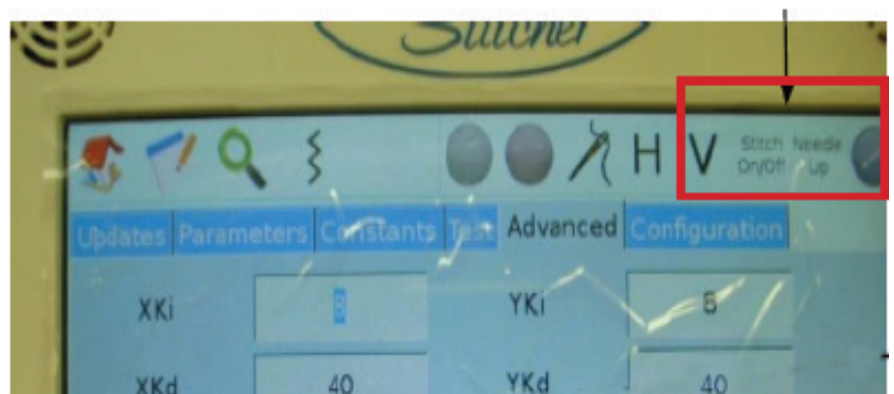


<b>Machine Types</b>	<b>Machine Type Setting</b>
PerfectStitch, King Quilter, A1, ESP, SE, Nolting	Default
Shirley Stitcher	Default
DLS, RAM, Viking, Pfaff, LS (without stitcherbox)	TinLizzie
APQS Pre-2009, Prodigy, LS (with stitcher box)	SC 3.0 or Default
TinLizzie (Ribbon)	TL 18
Juki, HandiQuilter, Babylock, Gammill, APQS Post-2009	Set to respective machine type i.e. Juki= "Juki"

**3** Unthread the needle and test that the machine responds properly.

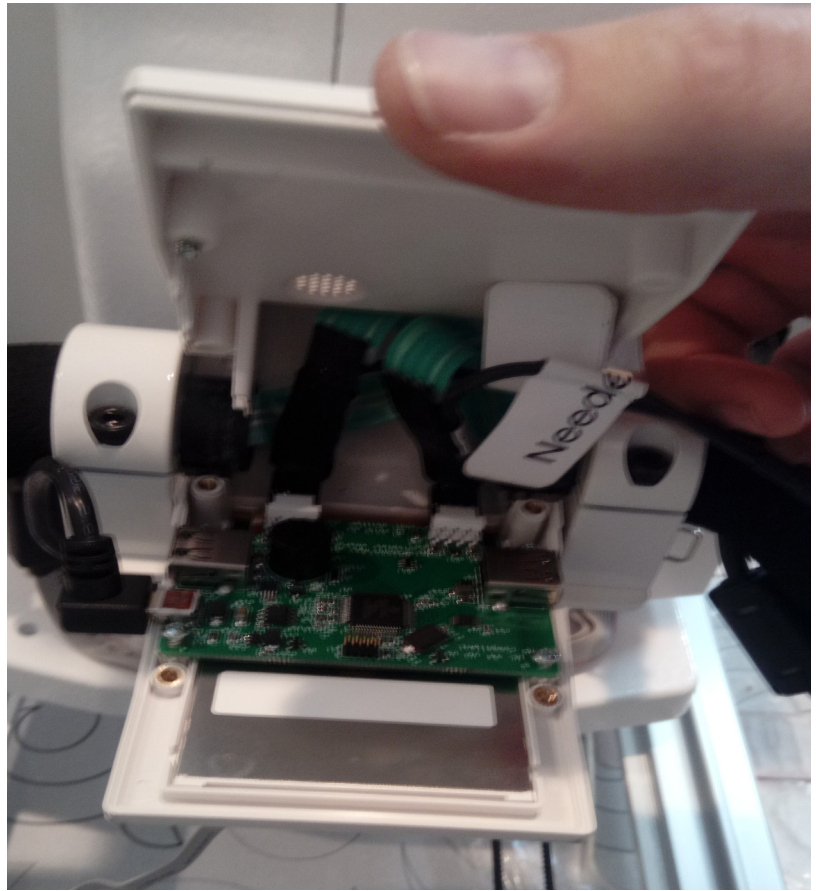
Press "Needle Up" the machine should perform a full needle up.

Press "Stitching" and move the machine. The needle should stitch regulate as the machine is moved. Press the "Stitching" key to deactivate stitching



**10** Once the buttons have been confirmed and the robotics have been confirmed they work with the machine, replace the cover back onto the Simply 16 machine display.

Take note of the wire routing: Do not pinch a wire when sealing back up. Make sure the handle bar wires don't come unplugged when closing.



**11** Route the robotics “handle bar” wire through one of the side USB ports.

Ensure not to pinch this wire too tight between the case and the USB port.

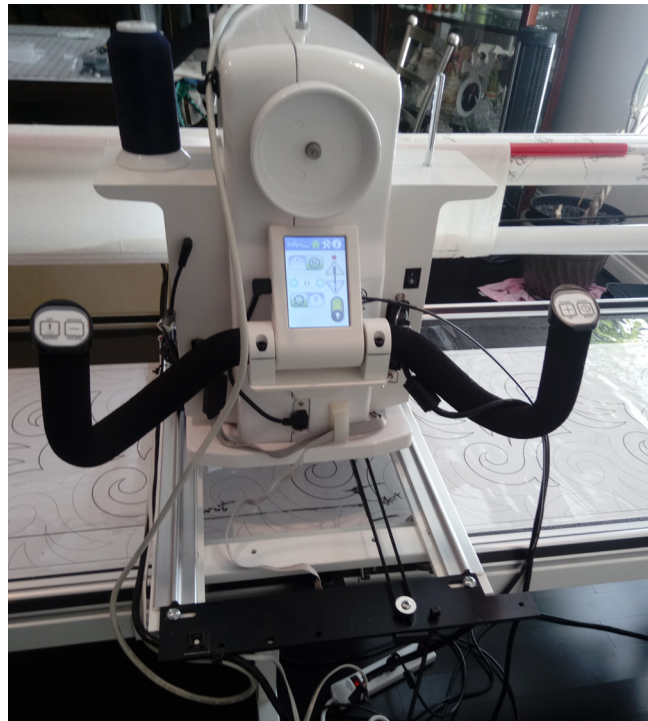




**12** Replace all screws in the display.

Zip tie all wires to ensure they do not get caught when the machine is traveling Forward/Backward or Left/Right.

*Reference your robotic attachment instructions for all cable routing and other attachment instructions.*



# Quilt EZ

## **Still need help?**

Visit [support.quiltez.com](http://support.quiltez.com) for tutorial videos and additional help documentation